



विद्या सर्वार्थ साधिका

ANANDALAYA
ANNUAL EXAMINATION
Class : VI

Subject: Mathematics
Date : 06/03/2020

M.M: 80
Time: 3 Hours

General Instructions :

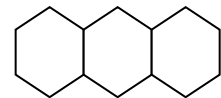
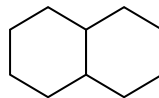
- i) All questions are compulsory.
- ii) This question paper contains 30 questions.
- iii) Section A contains 6 questions each of 1 mark.
- iv) Section B contains 6 questions each of 2 marks.
- v) Section C contains 10 questions each of 3 marks.
- vi) Section D contains 8 questions each of 4 marks.

Section- A

1. Write 1st two multiples of 6. (1)
2. Write the place value of 8 in 0.168 (1)
3. Write the equivalent fraction of $\frac{6}{7}$ having denominator 56. (1)
4. Sonali purchased 5 pens for ` 'y' each. If she gave a two hundred rupee note to the shopkeeper, find the amount she will get back. (1)
5. Which ratio is greater? 3 : 5 or 5 : 6? (1)
6. Write the number of lines of symmetry for a parallelogram. (1)

Section - B

7. Check whether 24, 36, 48 and 72 are in proportion or not. If so, write the extreme terms and middle terms. (2)
8. Check whether 901351 is divisible by 11. (2)
9. Three bells toll at intervals of 9, 12, 15 seconds respectively, beginning together. After what interval of time will they toll together? (2)
10. Represent 3.8 on the number line. (2)
11. A table top measures 3m 75 cm by 2m 70 cm. Find its perimeter. (2)
12. Find the rule which represents the number of matchsticks used to form the hexagons in the following diagrams. (2)



Section - C

13. Three different containers contain 120 l, 210 l and 270 l of milk respectively. Find the maximum capacity of a container which can measure the milk in all the containers an exact number of times. (3)

14. The data of class attendance of 20 students in a class for 30 days is given below: (3)

18	17	16	15	19	20	17	18	15	19
16	15	17	20	16	16	18	17	19	18
20	15	17	18	19	16	15	16	15	16

Arrange the above data using tally marks.

15. i) Arrange the following decimals in descending order : (3)

4.2, 4.0, 4.09, 4.201

ii) Express $\frac{8}{1000}$ as decimals

iii) Express 36.5 into fractions.

16. Arrange the following fractions in ascending order ; (3)

$\frac{2}{3}$, $\frac{5}{6}$, $\frac{7}{9}$, $\frac{11}{18}$

17. The following table shows the favourite games of 250 students of a school. (3)

Games	Swimming	Badminton	Football	Tennis	Cricket
No. of students	75	35	50	25	65

Represent the above data using a bar graph.

18. A marble tile measures 10 cm x 12 cm. How many tiles will be required to cover a wall of size 3m x 4m? (3)

19. Solve : (3)

i) $m + 7 = -21$

ii) $2 + x = 8$

iii) $\frac{x}{8} = 7$

20. (i) The sum of two angles is 90 degrees. The angles are in the ratio 2 : 3. Find the measure of each angle. (3)







(ii) Shanta bought 72 kg of wheat for ` 324. How many kilograms of wheat could she have bought had she spent only ` 144?

21. (A) Write whether the following statements are True or False? (3)
- (i) A rhombus has 4 lines of symmetry.
- (ii) An equilateral triangle has 3 lines of symmetry.
- (iii) A square has 4 lines of symmetry.
- (B) Draw a figure which has exactly 3 lines of symmetry

22. Construct $\angle PQR = 90^\circ$ Also, write the steps of construction. (3)

Section - D

23. i) Mrs. Singh bought $7\frac{1}{2}$ litres of milk. Out of this milk, $5\frac{3}{4}$ litres was consumed. How much milk is left with her? (4)
- ii) Find the sum : $2\frac{4}{5} + 1\frac{3}{10}$
24. Using decimals express: (4)
- i) 270 m into kilometres
- ii) ₹ 9 and 8 paise in rupees
- iii) 15 kg 96 g in kilograms
- iv) 3m and 50 cm into metres
25. The following pictograph represents the number of cycles produced in a factory during 2011-2015. Read the pictograph to answer the questions given below. (4)

No. of Cycles	Scale :  = 2000 cycles
2011	
2012	
2013	
2014	
2015	

- (i) How many cycles were produced in 2014?
- (ii) How many cycles were produced in 2012?
- (iii) In which year was the production of cycles the largest?
- (iv) Find the total number of cycles produced during 2011 - 2015.

26. The length of Anand's rectangular field is 300 m. and its breadth is $\frac{2}{3}$ of its length. If he uses three layers of barbed wire to fence the field, what is the total length of the wire used? Find the cost of leveling it at the rate of ₹ 12 per square metre. (4)
27. i) Five less than a number x is 12. What is the number? (4)
ii) 6 more than number ' r ' is 13. What is the number?
iii) 17 mangoes are added to a basket of mangoes to make the total 100. How many mangoes were there in the basket before?
iv) Find the number if divided by 3 gives 21.
28. The scores of three cricketers Virat, Gautam and Rahul are stated as : Virat scored ' r ' runs. Gautam scored 47 runs more than him and Rahul scored 23 runs less than Virat. Express the total runs scored by three of them in terms of ' r '. (4)
29. Sunidhi earns ₹ 18000 per month. If her monthly savings is ₹ 3000. Find the ratio of (4)
i) her income to her savings
ii) her income to her expenditure
iii) her expenditure to her savings
30. Construct a circle of radius 5.3 cm. Draw any chord in the circle and construct the perpendicular bisector of this chord. (4)